

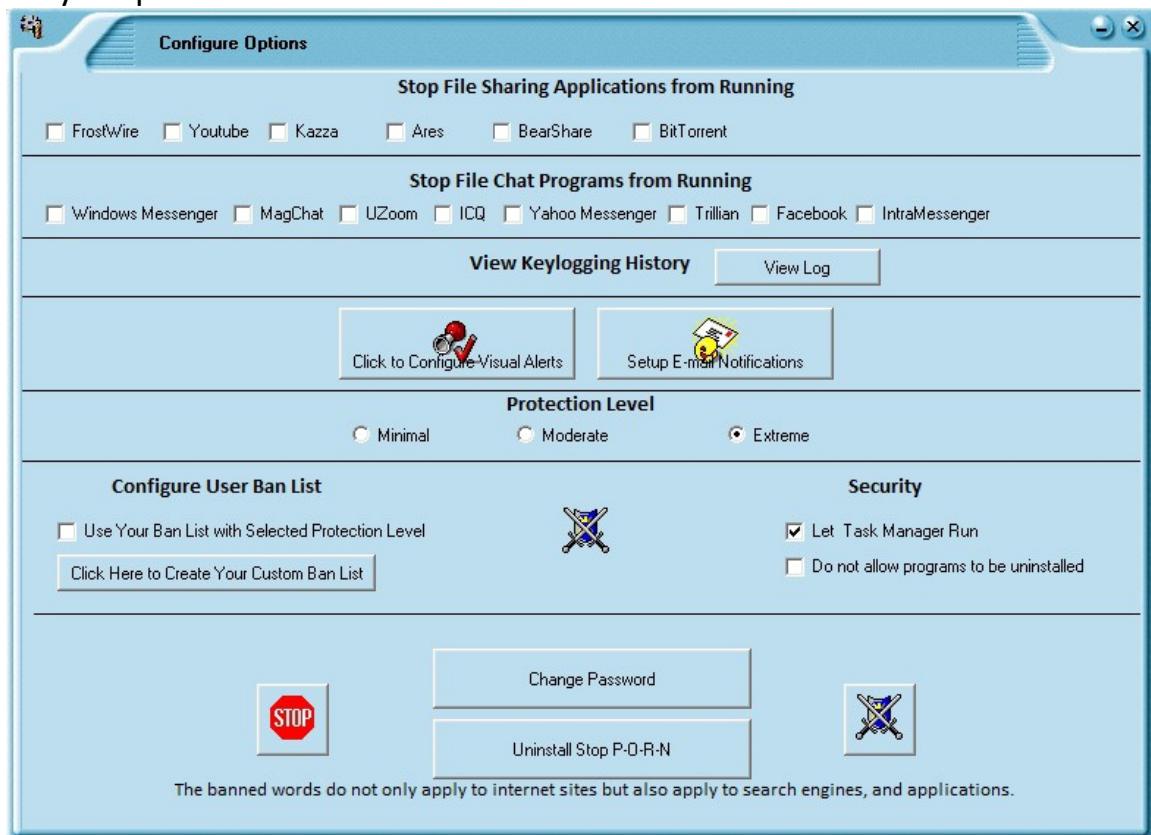
Stop P-O-R-N

How to use STOP P-O-R-N

Upon installation, STOP P-O-R-N will automatically start and ask you for a password. It is important that you do not lose this password. As a precautionary measure, there are no default passwords that will unlock Stop P-O-R-N. If there was, it would make it easy to hack into the program. DONOT LOSE YOUR PASSWORD. IT IS UNRECOVERABLE.

An icon of a blue shield will be displayed in your icon tray located at the bottom right hand side of your screen. The functions of STOP PORN can be accessed only from this icon.

Left Double-Click to shut down STOP P-O-R-N . STOP P-O-R-N will ask you for your password before it will shutdown.



Right Click to access Configure Options for STOP PORN or double click on the configure options icon located on your desktop or program files menu. The Configuration Options screen is where most of the control for Stop P-O-

Stop P-O-R-N

R-N resides. Again the options screen can not be accessed without your password created by you.

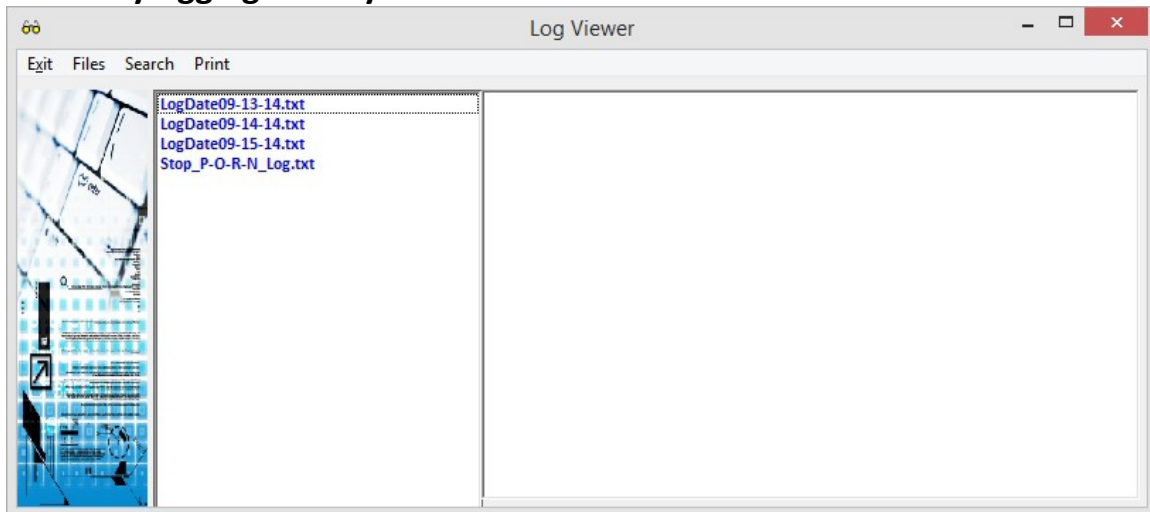
Stop File Sharing Applications from Running

We suggest that you check one or more of these when you do not want your child to use these applications. Many of our users have asked to give them an option to not allow the use of YouTube due to their child's misuse. If there are other applications or web sites that you would like to be disallowed, then more can be entered when you create your own custom ban list.

Stop File Chat Applications From Running

This is much the same as the stop filing sharing menu except it pertains to chat applications. The chat applications displayed on the configuration screen are ones that are the most requested to block by our users. Again, if there are ones that you would like to block which are not displayed, please enter them in your custom ban list.

View Keylogging History

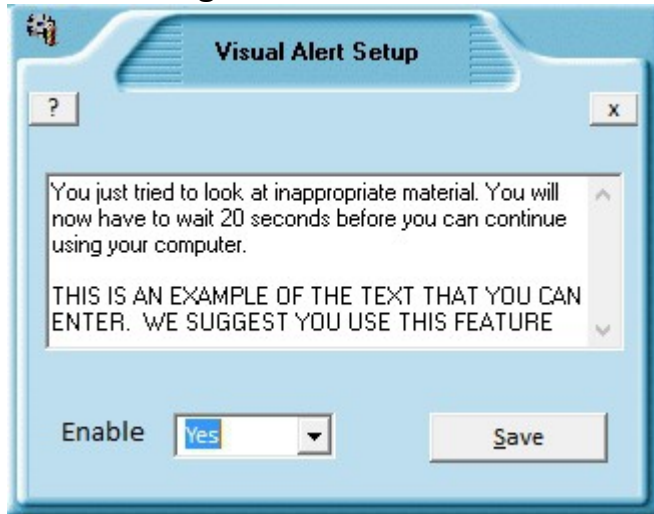


The viewer enables you to view two types of data. The first is the logdate which has all of the typing history or key-logging history. This history will show you what your child has typed on their computer. The other file that may be viewed is the Stop_P-O-R-N_log. This log file displays the history of

Stop P-O-R-N

when Stop P-O-R-N has started or stopped. It also contains the alerts that were sent when an inappropriate word was used by the user of the computer. The viewer has the ability to print, search, and erase files.

Click to Configure Visual Alerts Button



The Visual Alert that Stop P-O-R-N will give to the user is a full screen display with the text you entered in the setup. We provided you a sample text sentence. It can be anything you want. A user said they were having fun with it and entered the text "Your mama is watching you!"

The alert screen will launch if you enable it. The alert screen will display your flashing text full screen. The user will have to wait for 20 seconds before normal use can begin.

The visual alert will be triggered by an inappropriate word being used or any banned word or application.

Stop P-O-R-N

Click to Setup E-Mail Notifications Button

The username is your gmail address. Ex: johndoe@gmail.com

Username: mygmailusername@gmail.com

Password: jdlskj

From: mygmailusername@gmail.com

To: someoneiwanttosendto@domain.com

To send to multiple e-mail addresses separate with a colon. For example: someone@att.com, someone@gmail.com

Activate E-Mail Notifications

Send Test E-Mail Save

[Click Here to Create a Gmail Account](#)

E-mail notifications to the parent concerning the use of the computer Stop P-O-R-N is installed can be setup using this screen. Because there are so many different e-mail providers and settings, we have decided to design our e-mail notifications around Gmail.

Stop P-O-R-N

To begin, you must first have a valid Gmail account. If you do, then enter your username and password. The username is your Gmail e-mail address. Once you fill in all of the necessary fields, make sure you checkmark the “Activate E-mail Notifications” To ensure the e-mail notifications work, you may send a test e-mail to yourself.

If you do not have a Gmail account you must create one. It will cost you nothing to do so. We have provided a link at the bottom left hand side of the screen to bring you to the Gmail setup page.

The e-mail alert will be sent to the e-mail addresses you have specified. The body of the e-mail will tell you what word was searched by the user of the computer and also tell you what computer name it was. This comes in handy when you have multiple people using Stop P-O-R-N in the family. It is a must to know what computer is being used and the time the inappropriate word was searched.

Protection Level

There are three protection levels that may be used. We suggest that “extreme” be used to provide the maximum protection. Extreme is the default setting. There are some advanced users who would like to create a more custom ban list so checking “minimum” and creating the custom list makes better sense for them. The “moderate” protection provides adequate pornographic blocking. Every individual has their own opinion as to what is suitable viewing and what is not. The best way to find out what protection level suites you is to try Stop P-O-R-N on these three levels and make your decision. When in doubt, select “Extreme” and make very few custom ban words. The “Extreme” setting is by far the best for children.

Stop P-O-R-N

Configure User Ban List

The screenshot shows a software window titled "STOP P-O-R-N" with a subtitle "Create Your Custom Ban List". The window contains a text area with instructions: "To ban a website that is called www.banme.com only include the name banme in the list. Never include www or .com or .org, etc. Only use the words between www and .com. The banned words do not only apply to internet sites but also apply to search engines, and applications. If banning the application Limewire is desired, add the word limewire to the ban list. The word limewire will also not be allowed as a search word on Goole. Yahoo. or anv other search engine." Below the text is an input field, an "Add" button, and a "Clear Entry" button. A list box contains the word "porn" in blue text. To the right of the list box are up and down arrow buttons and a "Delete" button. At the bottom, there is a "Word Count" label showing "1", a "Suggest Key Words" button, and a "Save" button.

The User Ban List is a very powerful tool. It must be used with caution. You can stop applications and web pages from being viewed. With power there must be caution. Just remember when you enter a word to be banned, this will pertain to the web and to applications themselves.

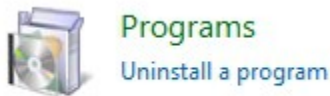
If you find a key word that you think we should incorporate into our next release, just press the button "Suggest Key Words" and we will review and make the determination to include it. Your input is important to us!

Stop P-O-R-N

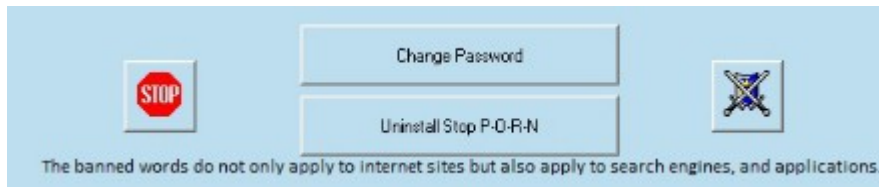
Security



The security features that are incorporated into Stop P-O-R-N are numerous but can be enhanced by not letting Task Manager and not letting programs to be removed by the person using the computer. The reasons are these: (1) by disabling the Task Manager, it will not allow the user to terminate Stop P-O-R-N using Task Manager. When Task Manager is disabled, no program can be terminated by the user.



(2) In order to prohibit Stop P-O-R-N from being installed or any other program without your permission, then check “do not allow programs to be uninstalled.” We suggest that both of these be enabled so that your computer is more locked down. Just to note: Stop P-O-R-N requires a password to uninstall it. Having this feature is not necessary to deter the un-installation of Stop P-O-R-N.



The next few features are self-explanatory but wanted to ensure that we touch on these. The “Stop” button will terminate all Stop P-O-R-N

Stop P-O-R-N

processes. The “blue shield” will start all Stop P-O-R-N processes. The “Change Password” allows you to change your original password. The “Uninstall Stop P-O-R-N” will allow you to do a complete uninstall of Stop P-O-R-N components.

Stop P-O-R-N Scheduler

Stop P-O-R-N Scheduler

Select Time

Interval: Hourly Daily Weekly Specify

Weekly: Every: Monday Tuesday Wednesday Thursday Friday Saturday Sunday

Time: At: 10:00 PM

Click to Make Time Recurring

Please select time before selecting which job you would like to schedule. Must Click on "Interval" "Time" and "Date" before selecting a task. If this is not done, the time of the task will not show properly.

Status

Name	Path	Schedule	Recurring
ShutdownPC.exe	C:\Users\Public\Documents\hzip\Shutdown...	On Monday 22:00:00	True

Shutdown PC Restart PC Remove Task

Start Stop P-O-R-N Shutdown Stop P-O-R-N Clear all Tasks Send to Icon Tray

The schedule is a unique feature separating itself from other applications. This will allow you to have complete control to schedule tasks such as

1. Shutdown PC
2. Restart PC
3. Start Stop P-O-R-N
4. Shutdown Stop P-O-R-N

The scheduler will provide more control of the computer that Stop P-O-R-N is installed.

Stop P-O-R-N

Internet Access Timer



The Internet Access Timer only controls internet access and nothing more. The timer can be set to a certain interval in minutes to disable the internet access. If the time is set to 5 min, than the internet access will be disabled in 5 min. You will have to manually enable it again for the internet is re-established. The Internet Access Timer was created for a few users who had specific uses. They wanted to have their children use the computer and not go on the internet. Most people do not use the timer, they just hit the button "Stop Internet Access Now" and then hit the button "Hide". The children will not be able to access the timer unless they have the password. After setting the timer, make sure the hide button is pressed to located it in the icon tray and to enable password protection. Click on the icon with the two computers connected with lightning bolt to gain



Stop P-O-R-N

access. You will have to input the password.